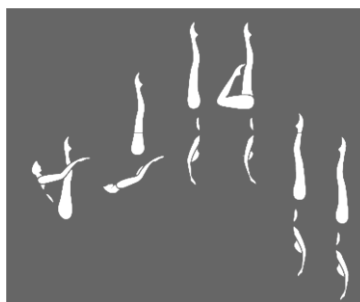


ANNEX PROVES ACCÉS JUNIOR 2018_19

JUNIOR TEAM REQUIRED ELEMENTS (DD 12.3)

1 Starting in a **Submerged Back Pike Position** with the legs perpendicular to the surface, a *Thrust* is executed to a **Vertical Position** and with no loss of height one leg is lowered to a **Bent Knee Vertical Position**. A rapid *180° Spin* is executed as the bent knee is extended to a **Vertical Position**. All movements are executed rapidly. [DD 2.3]



320 Kipswirl Split Closing 180° DD 2.3

A Kipswirl is executed to the **Vertical Position**. The legs are lowered symmetrically to a **Split Position**. A rapid rotation of 180° is executed, as the legs symmetrically close to a **Vertical Position**. A *Vertical Descent* is executed.

